

4

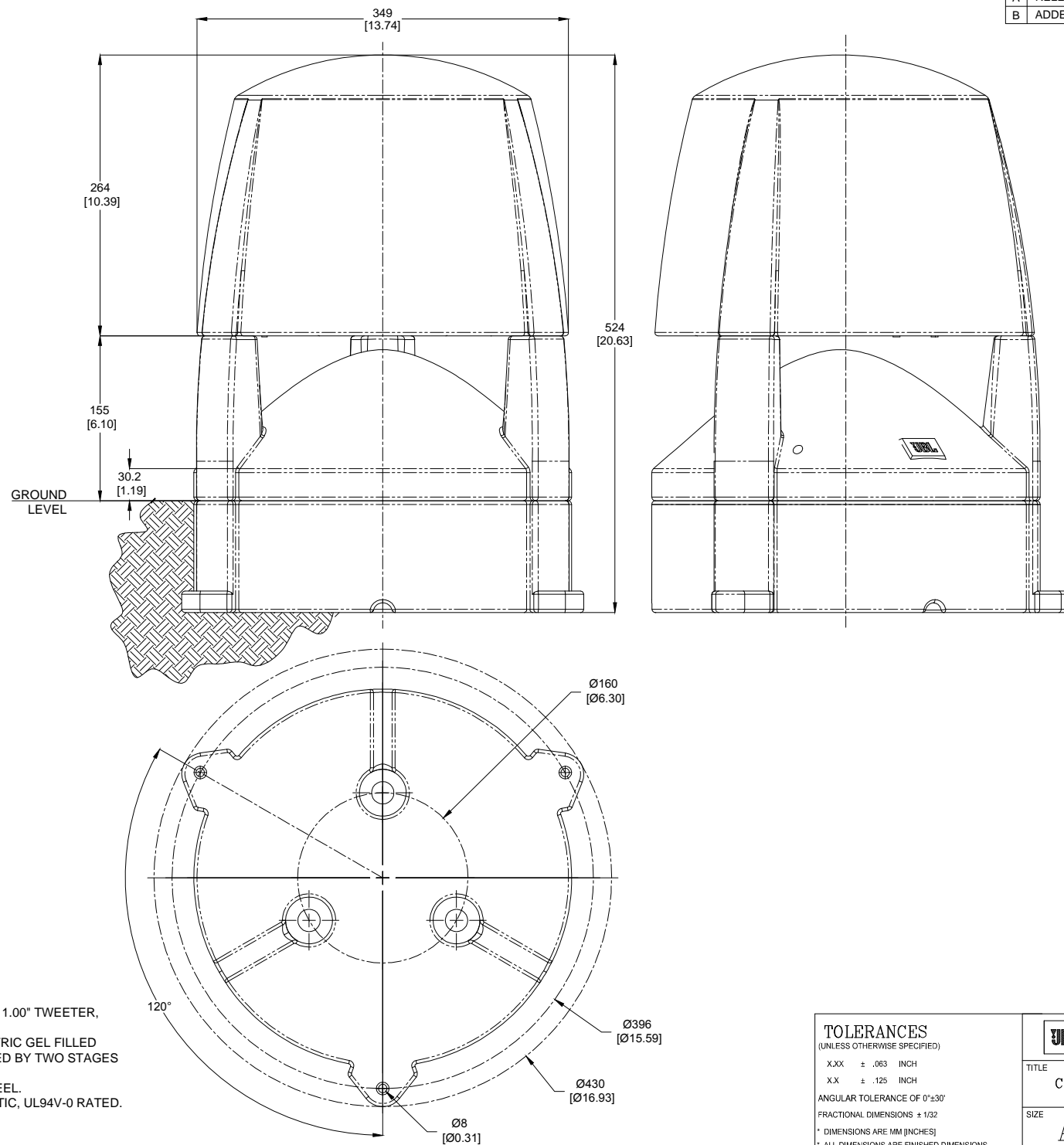
3

2

1

THESE DRAWINGS AND SPECIFICATIONS ARE THE PROPERTY OF JBL INCORPORATED. THEY ARE ISSUED IN STRICT CONFIDENCE AND SHALL NOT BE REPRODUCED OR USED AS THE BASIS FOR MANUFACTURE OR APPARATUS WITHOUT WRITTEN PERMISSION.

REVISIONS			
LTR	DESCRIPTION	DRFT	DATE
A	RELEASE TO MARKETING	AD	1/17/2017
B	ADDED GROUND LEVEL DIMS	AD	1/24/2017



- COMPONENTS: 8.00" COAX DRIVER WITH 1.00" TWEETER, PASSIVE CROSSOVER, TRANSFORMER.
- INPUT CONNECTOR: WIRE WITH DIELECTRIC GEL FILLED WIRE NUTS, WATER INGRESS PROTECTED BY TWO STAGES OF GLAND NUTS.
- GRILL: POWDER COATED STAINLESS STEEL.
- MATERIALS: LDPE POLYETHELENE PLASTIC, UL94V-0 RATED.
- NET WEIGHT: 7.8 KG (17 LB).

NOTES:

TOLERANCES
(UNLESS OTHERWISE SPECIFIED)

X.XX ± .063 INCH
 X.X ± .125 INCH
 ANGULAR TOLERANCE OF 0°±30'
 FRACTIONAL DIMENSIONS ± 1/32
 * DIMENSIONS ARE MM [INCHES]
 * ALL DIMENSIONS ARE FINISHED DIMENSIONS
 * DO NOT SCALE DRAWING



JBL PROFESSIONAL
 A Harman International Company
 Northridge, California 91329 U.S.A.

TITLE CUSTOMER DRAWING, CONTROL 88M		
SIZE A	DRAWING NO. 1000299085	REV B
SCALE NTS	SHEET 1	OF 1